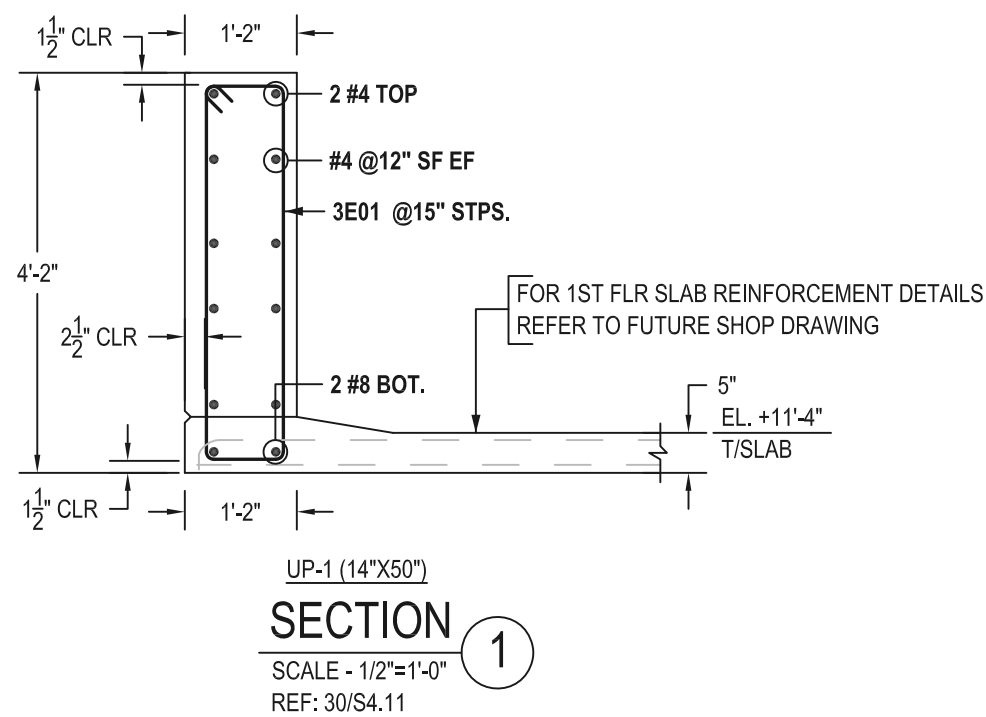
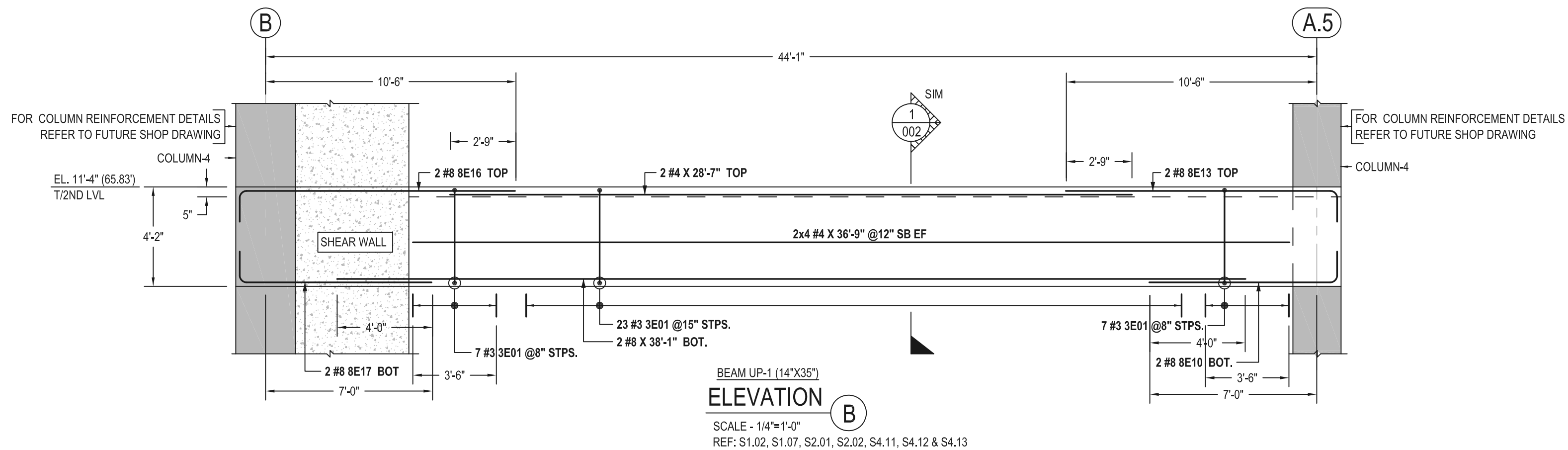
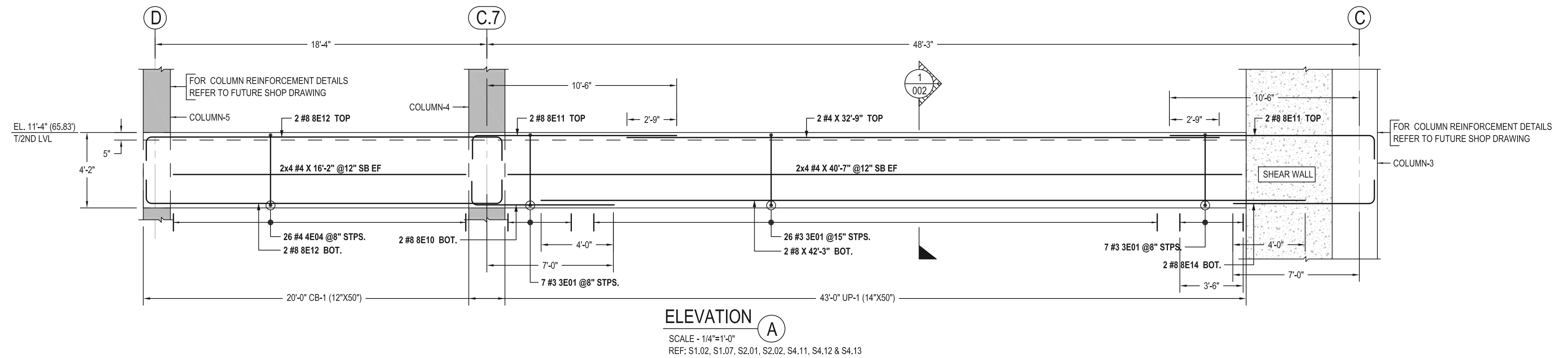


2ND LEVEL CONCRETE BEAM KEY PLAN

SCALE - 1/12"=1'-0"
REF:1/S2.02

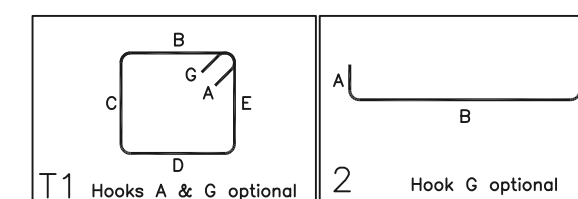


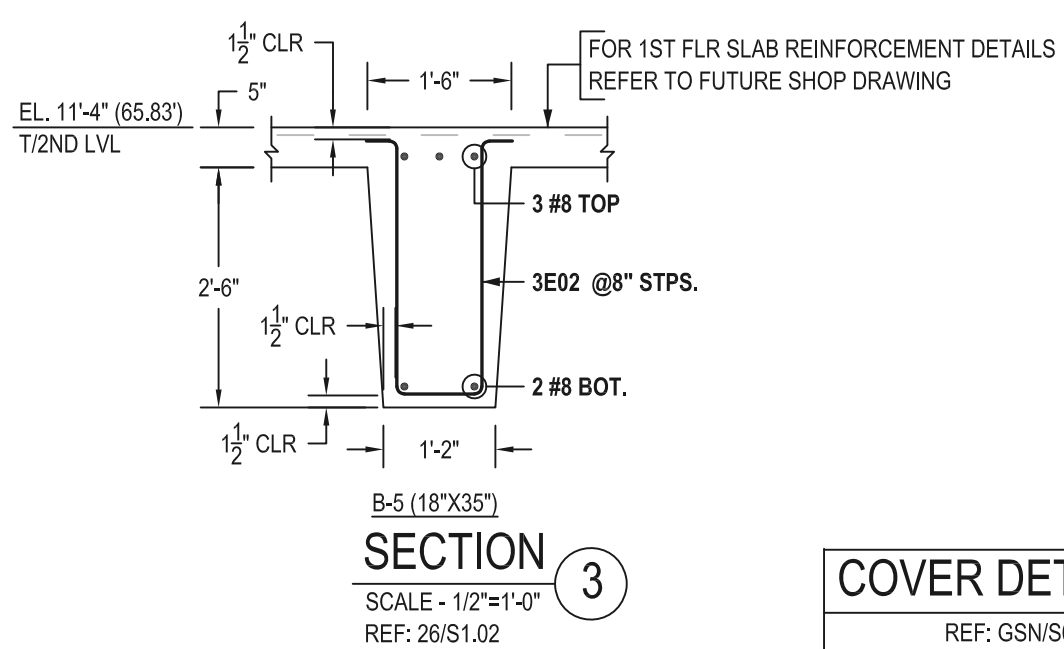
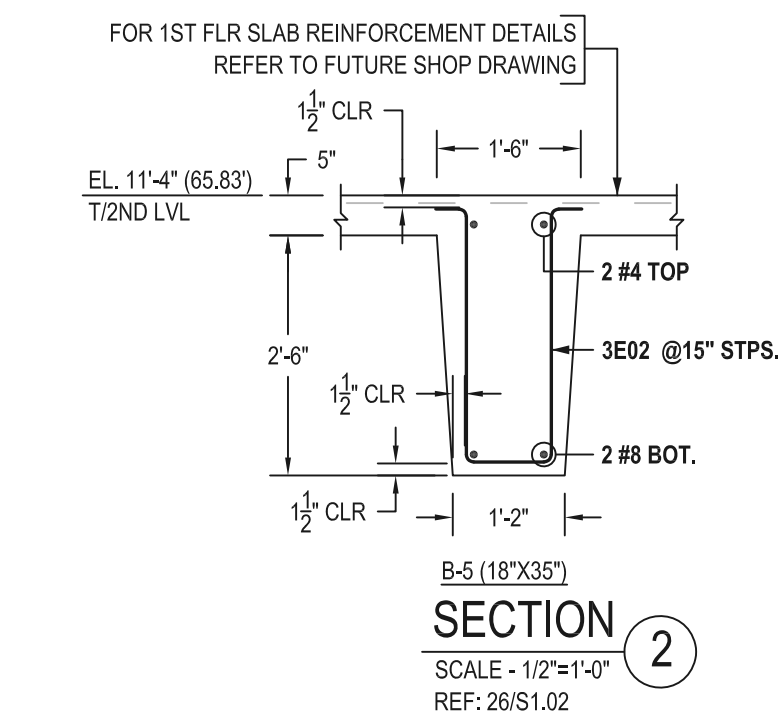
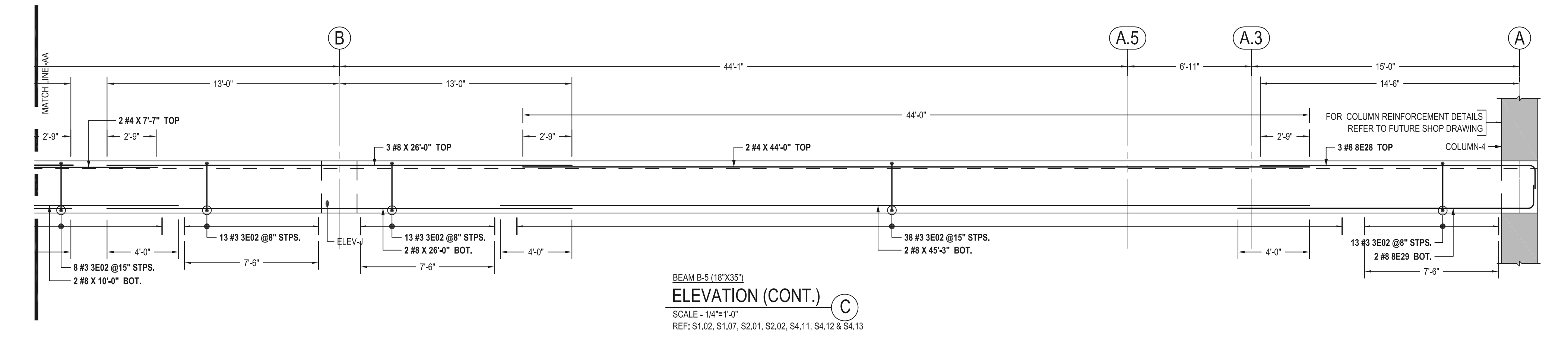
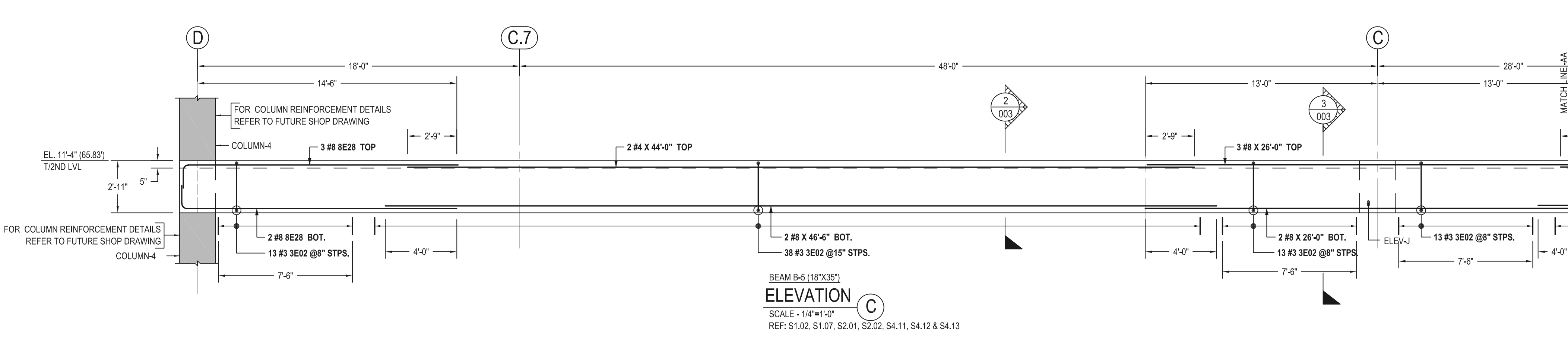


COVER DETAILS	
REF: GSN/S0.01	
FOR CONC.BEAM	
BOTTOM	1 1/2" CLR.
SIDE INNER FACE	1 1/2" CLR.
SIDE OUTER FACE	2 1/2" CLR.
TOP	1 1/2" CLR.

ABBREVIATIONS	
BOTTOM	BOT.
TOP&BOTTOM	T&B
CONTINUOUS	CONT.
CORNER BAR	COR.
VERTICAL	VERT.
HORIZONTAL	HORZ.
STIRRUPS	STPS.
EACH WAY	EW
EACH FACE	EF
INNER FACE	IF
OUTER FACE	OF
EACH SIDE	ES
EACH END	EE
DOWEL	DWL.
DOWEL/VERTICAL	D/V
TRANSVERSE	TRANS.
LONG WAY BAR	LW
SHORT WAY BAR	SW
ADDITIONAL	ADD'L

Drawing Sheet : R5.002				Bent Bar List												
Bar Mark	Qty	Size	Total Length	Type	'A'	'B'	'C'	'D'	'E'	'F'	'G'	'H'	'J'	'K'	'O'	'R'
3E01	63	#3	10'-2"	T1	0'-4"	0'-10"	3'-11"	0'-10"	3'-11"		0'-4"					
4E04	26	#4	10'-1"	T1	0'-4 1/2"	0'-9"	3'-11"	0'-9"	3'-11"		0'-4 1/2"					
8E10	4	#8	9'-3"	2	1'-4"	7'-11"										
8E11	4	#8	12'-8"	2	1'-4"	11'-4"										
8E12	4	#8	22'-5"	2	1'-4"	19'-9"					1'-4"					
8E13	2	#8	12'-9"	2	1'-4"	11'-5"										
8E14	2	#8	9'-2"	2	1'-4"	7'-10"										
8E16	2	#8	12'-11"	2	1'-4"	11'-7"										
8E17	2	#8	9'-5"	2	1'-4"	8'-1"										

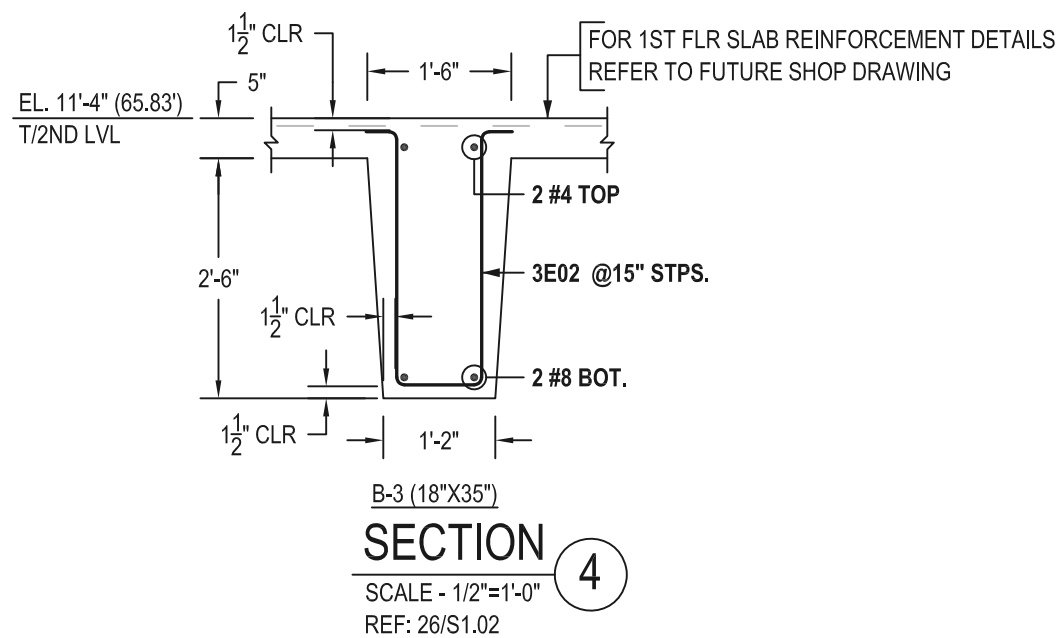
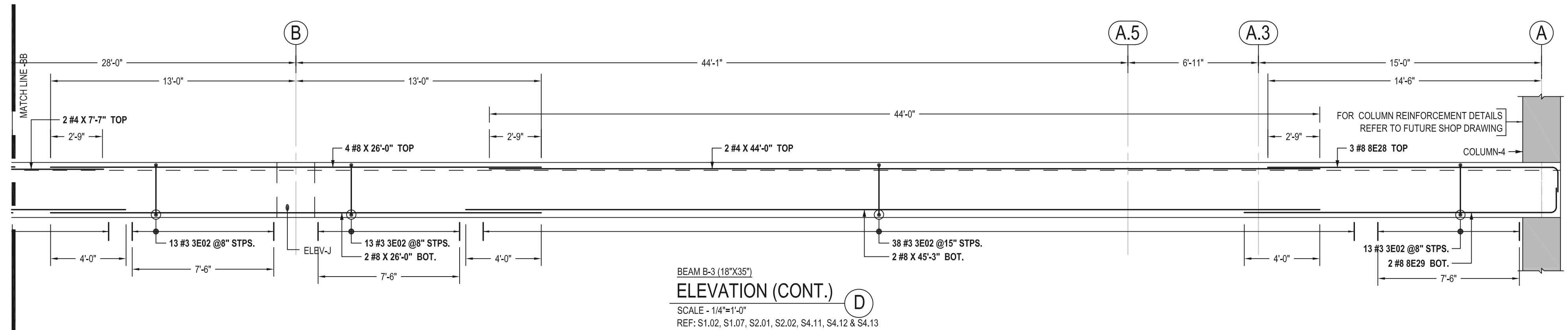
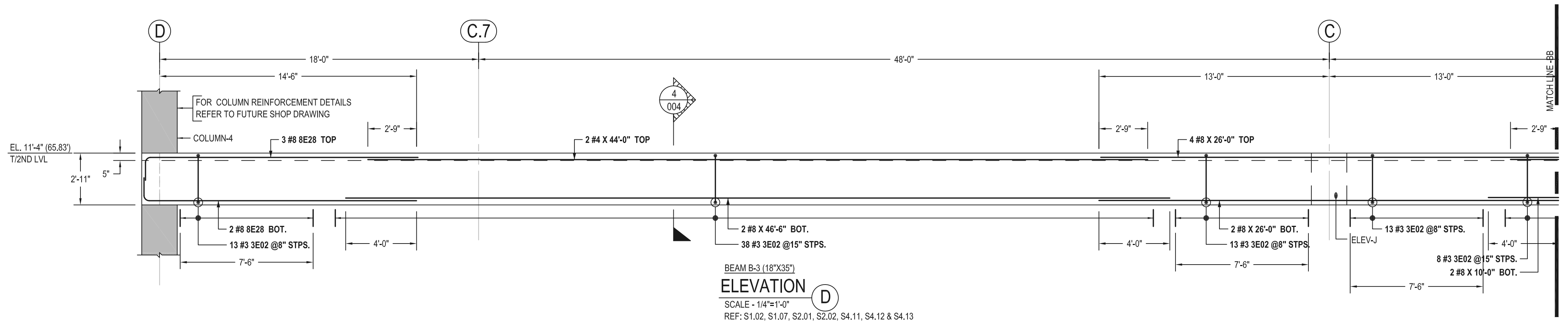




COVER DETAILS	
REF: GSN/S0.01	
FOR CONC.BEAM	
BOTTOM	1 1/2" CLR.
SIDE	1 1/2" CLR.
TOP	1 1/2" CLR.

ABBREVIATIONS	
BOTTOM	BOT.
TOP&BOTTOM	T&B
CONTINUOUS	CONT.
CORNER BAR	COR.
VERTICAL	VERT.
HORIZONTAL	HORZ.
STIRRUPS	STPS.
EACH WAY	EW
EACH FACE	EF
INNER FACE	IF
OUTER FACE	OF
EACH SIDE	ES
EACH END	EE
DOWEL	DWL.
DOWEL/VERTICAL	D/V
TRANSVERSE	TRANS.
LONG WAY BAR	LW
SHORT WAY BAR	SW
ADDITIONAL	ADD'L

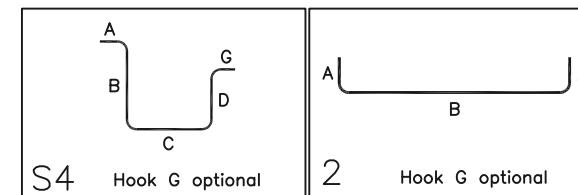
Drawing Sheet : R5.003				Bent Bar List												
Bar Mark	Qty	Size	Total Length	Type	'A'	'B'	'C'	'D'	'E'	'F'	'G'	'H'	'J'	'K'	'O'	'R'
3E02	162	#3	6'-11"	S4	0'-4"	2'-8"	0'-11"	2'-8"			0'-4"					
8E28	8	#8	16'-9"	2	1'-4"	15'-5"										
8E29	2	#8	17'-11"	2	1'-4"	16'-7"										

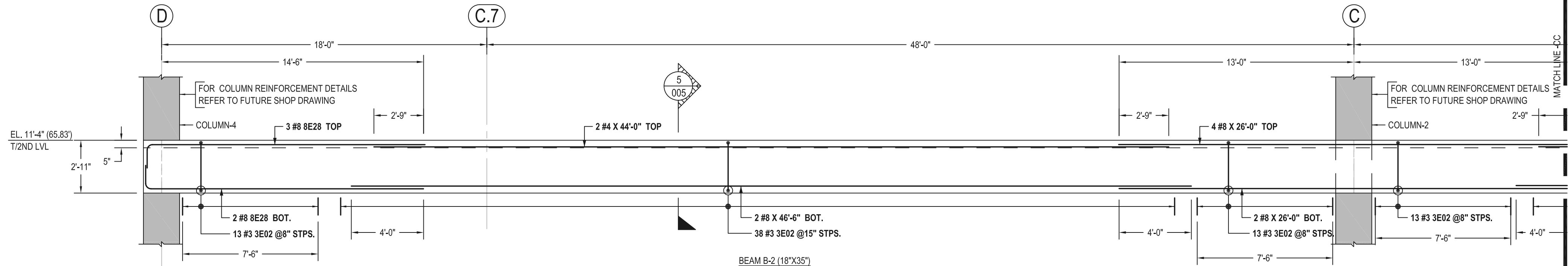


COVER DETAILS	
REF: GSN/S0.01	
FOR CONC.BEAM	
BOTTOM	1 1/2" CLR.
SIDE	1 1/2" CLR.
TOP	1 1/2" CLR.

ABBREVIATIONS	
BOTTOM	BOT.
TOP&BOTTOM	T&B
CONTINUOUS	CONT.
CORNER BAR	COR.
VERTICAL	VERT.
HORIZONTAL	HORZ.
STIRRUPS	STPS.
EACH WAY	EW
EACH FACE	EF
INNER FACE	IF
OUTER FACE	OF
EACH SIDE	ES
EACH END	EE
DOWEL	DWL.
DOWEL/VERTICAL	D/V
TRANSVERSE	TRANS.
LONG WAY BAR	LW
SHORT WAY BAR	SW
ADDITIONAL	ADD'L

Drawing Sheet : R5.004				Bent Bar List												
Bar Mark	Qty	Size	Total Length	Type	'A'	'B'	'C'	'D'	'E'	'F'	'G'	'H'	'J'	'K'	'O'	'R'
3E02	162	#3	6'-11"	S4	0'-4"	2'-8"	0'-11"	2'-8"			0'-4"					
8E28	8	#8	16'-9"	2	1'-4"	15'-5"										
8E29	2	#8	17'-11"	2	1'-4"	16'-7"										





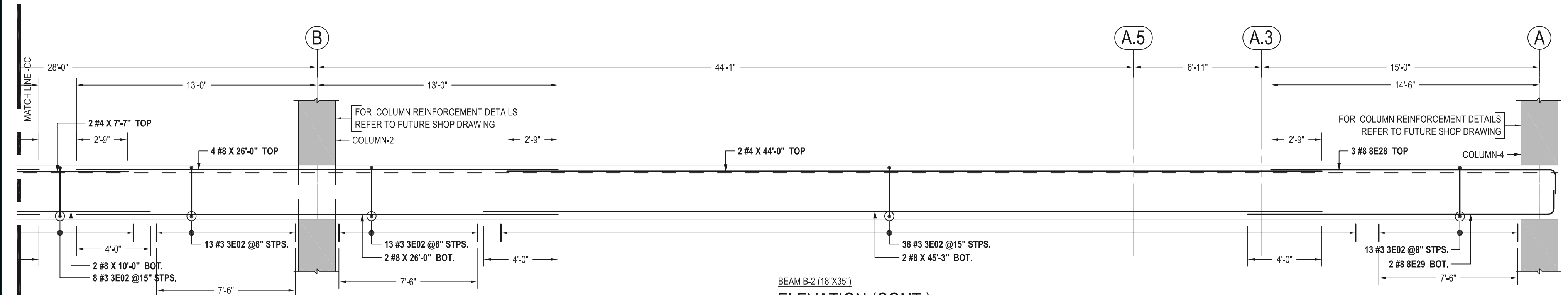
BEAM B-2 (18\"X35\")

ELEVATION

SCALE - 1/4\"=1'-0\"

REF: S1.02, S1.07, S2.01, S2.02, S4.11, S4.12 & S4.13

E



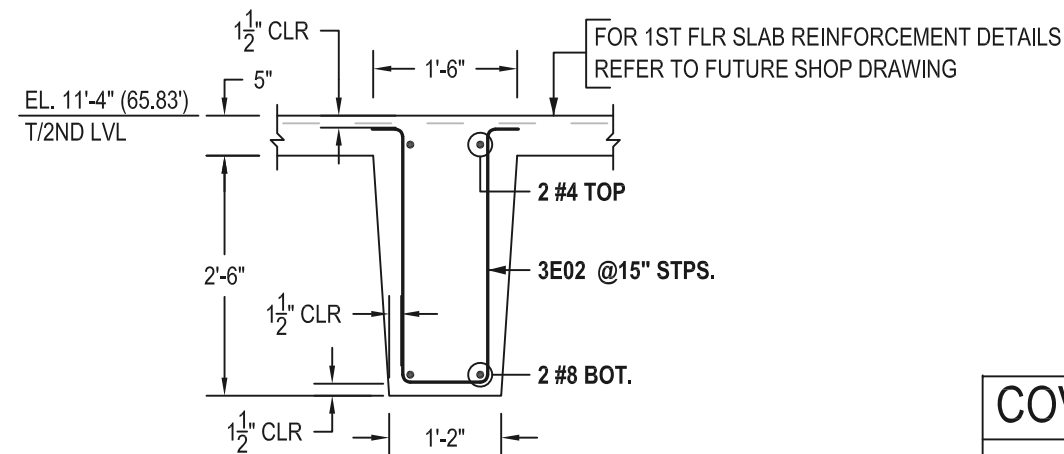
BEAM B-2 (18\"X35\")

ELEVATION (CONT.)

SCALE - 1/4\"=1'-0\"

REF: S1.02, S1.07, S2.01, S2.02, S4.11, S4.12 & S4.13

E



B-2 (18\"X35\")

SECTION

SCALE - 1/2\"=1'-0\"

REF: 26/S1.02

5

COVER DETAILS

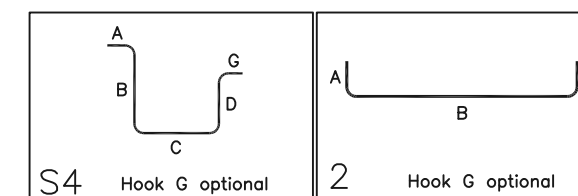
REF: GSN/S0.01

FOR CONC.BEAM

BOTTOM	1 1/2\" CLR.
SIDE	1 1/2\" CLR.
TOP	1 1/2\" CLR.

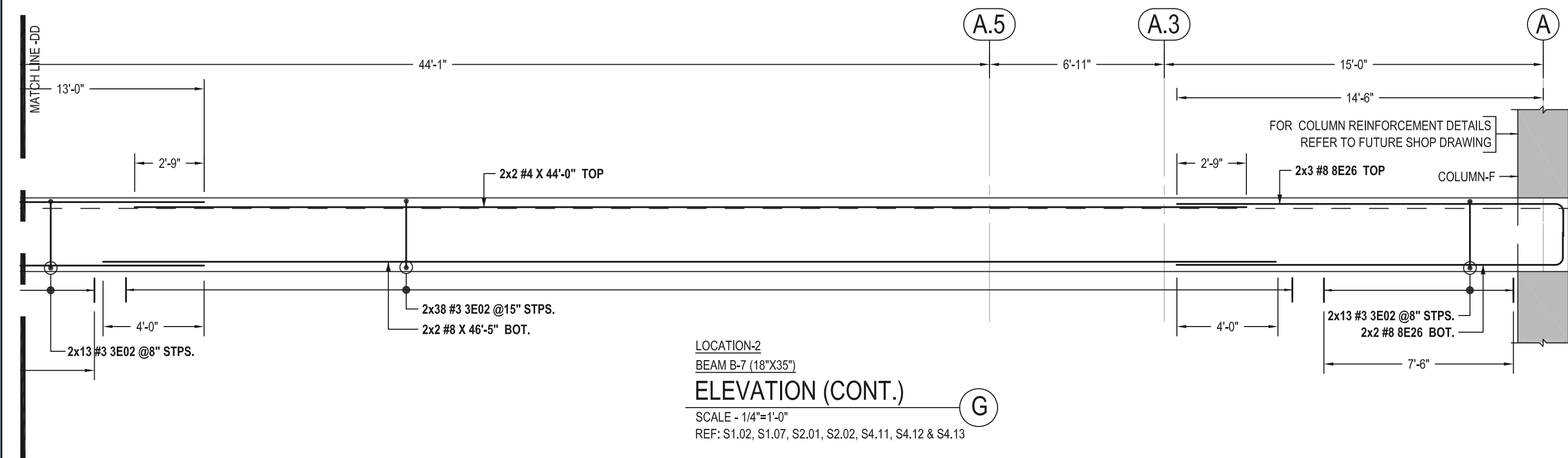
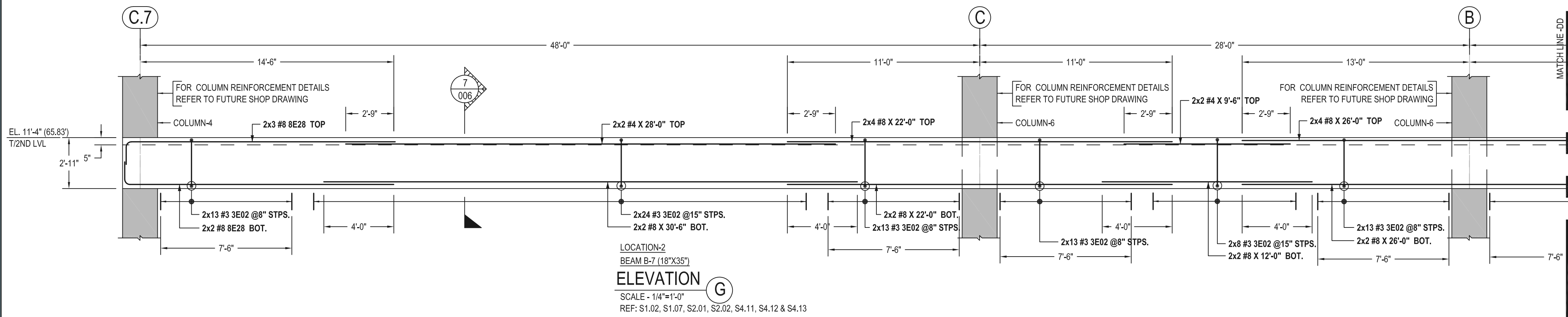
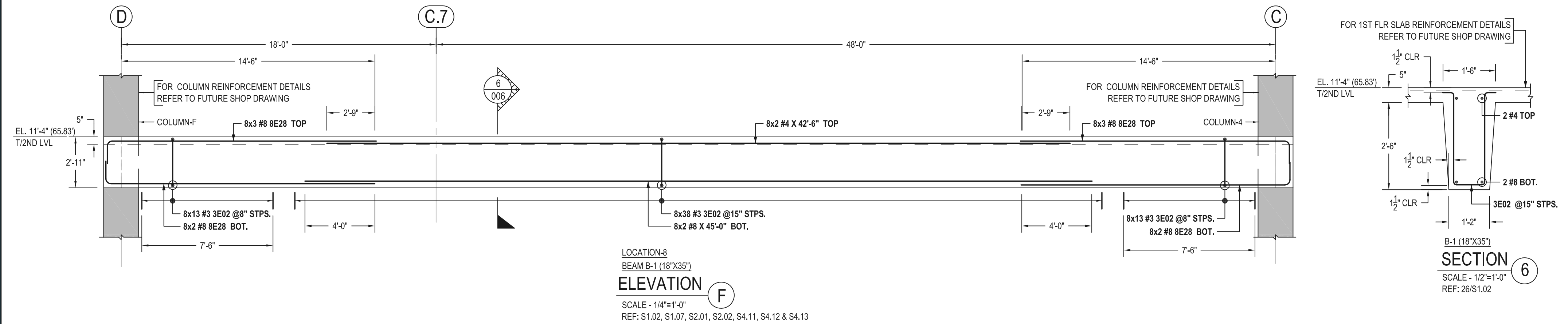
ABBREVIATIONS	
BOTTOM	BOT.
TOP&BOTTOM	T&B
CONTINUOUS	CONT.
CORNER BAR	COR.
VERTICAL	VERT.
HORIZONTAL	HORZ.
STIRRUPS	STPS.
EACH WAY	EW
EACH FACE	EF
INNER FACE	IF
OUTER FACE	OF
EACH SIDE	ES
EACH END	EE
DOWEL	DWL.
DOWEL/VERTICAL	D/V
TRANSVERSE	TRANS.
LONG WAY BAR	LW
SHORT WAY BAR	SW
ADDITIONAL	ADD'L

Drawing Sheet : R5.005				Bent Bar List												
Bar Mark	Qty	Size	Total Length	Type	'A'	'B'	'C'	'D'	'E'	'F'	'G'	'H'	'J'	'K'	'O'	'R'
3E02	162	#3	6'-11"	S4	0'-4"	2'-8"	0'-11"	2'-8"			0'-4"					
8E28	8	#8	16'-9"	2	1'-4"	15'-5"										
8E29	2	#8	17'-11"	2	1'-4"	16'-7"										



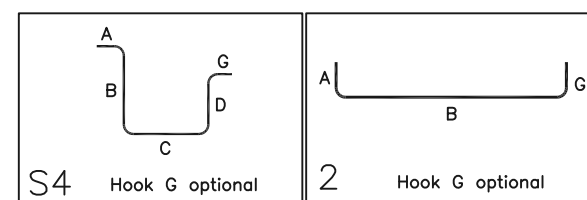
FOR APPROVAL WAIVED

ALL BARS IN THIS DRAWING ASTM A615 GRADE 60 BLACK UNCOATED



Drawing Sheet : R5.006

Bar Mark	Qty	Size	Total Length	Type	'A'	'B'	'C'	'D'	'E'	'F'	'G'	'H'	'J'	'K'	'O'	'R'
3E02	808	#3	6'-11"	S4	0'-4"	2'-8"	0'-11"	2'-8"			0'-4"					
8E26	10	#8	16'-8"	2	1'-4"	15'-4"										
8E28	90	#8	16'-9"	2	1'-4"	15'-5"										



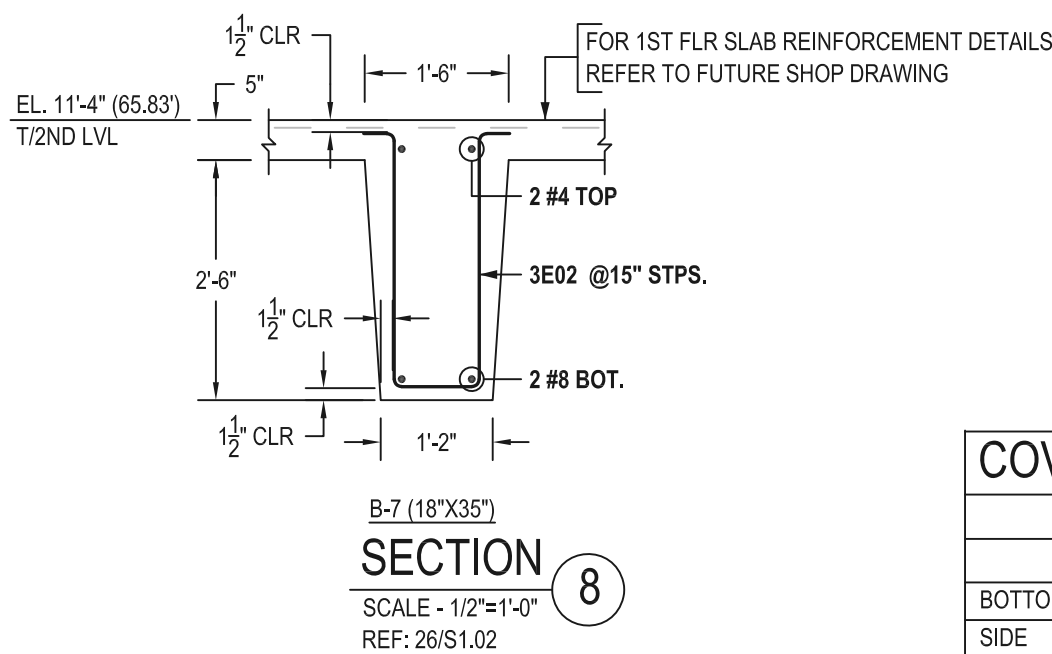
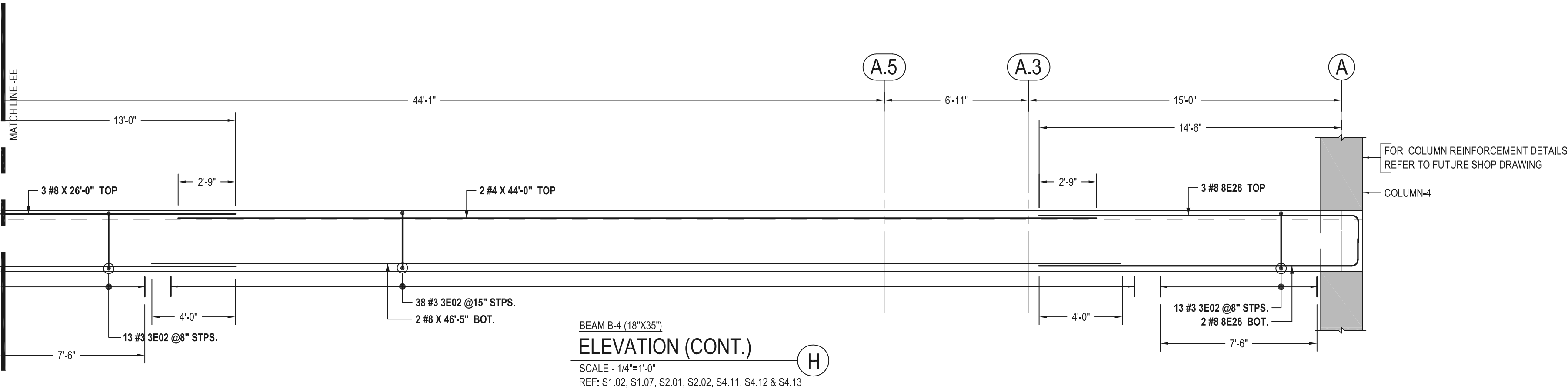
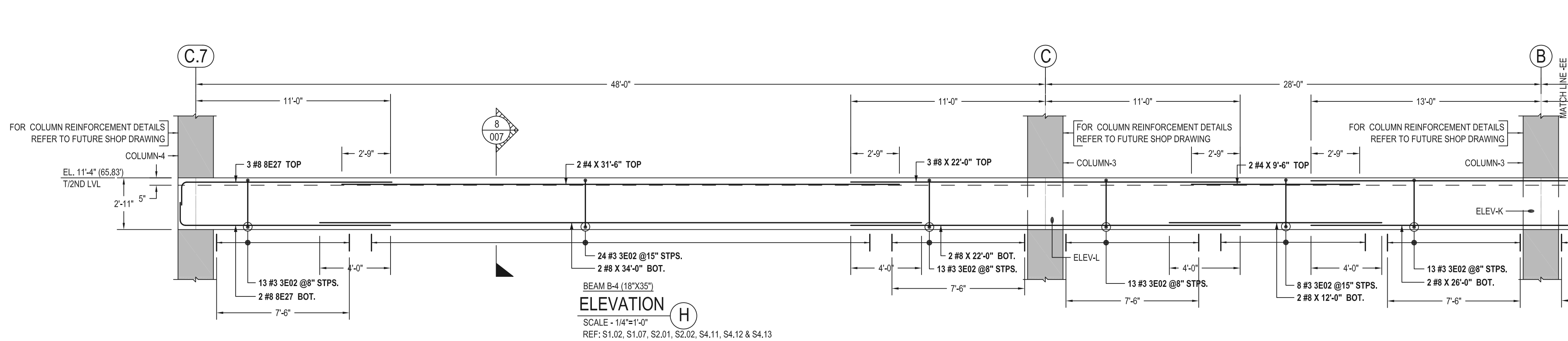
ABBREVIATIONS

BOTTOM	BOT.
TOP&BOTTOM	T&B
CONTINUOUS	CONT.
CORNER BAR	COR.
VERTICAL	VERT.
HORIZONTAL	HORZ.
STIRRUPS	STPS.
EACH WAY	EW
EACH FACE	EF
INNER FACE	IF
OUTER FACE	OF
EACH SIDE	ES
EACH END	EE
DOWEL	DWL.
DOWEL/VERTICAL	D/V
TRANSVERSE	TRANS.
LONG WAY BAR	LW
SHORT WAY BAR	SW
ADDITIONAL	ADD'L

COVER DETAILS

REF: GSN/S0.01	
FOR CONC.BEAM	
BOTTOM	1 1/2" CLR.
SIDE	1 1/2" CLR.
TOP	1 1/2" CLR.

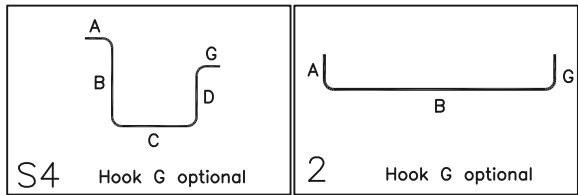
FOR APPROVAL WAIVED
ALL BARS IN THIS DRAWING ASTM A615 GRADE 60 BLACK UNCOATED

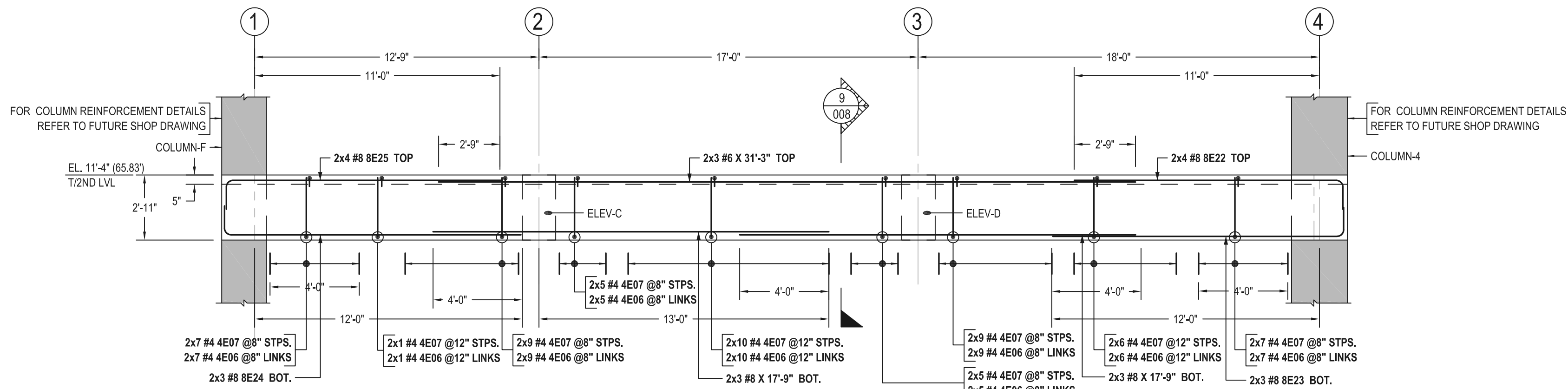


COVER DETAILS	
REF: GSN/S0.01	
FOR CONC.BEAM	
BOTTOM	1 1/2" CLR.
SIDE	1 1/2" CLR.
TOP	1 1/2" CLR.

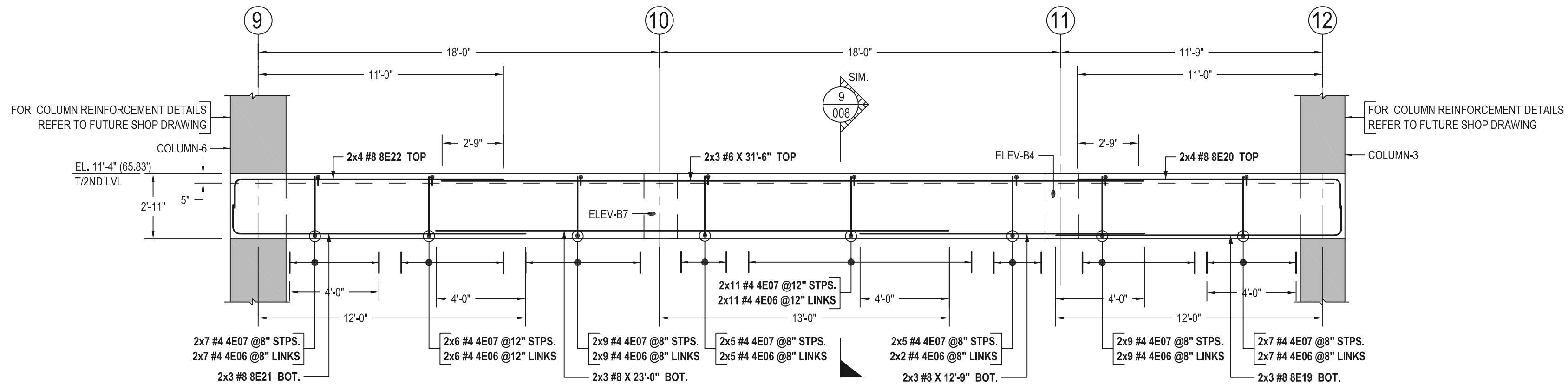
ABBREVIATIONS	
BOTTOM	BOT.
TOP&BOTTOM	T&B
CONTINUOUS	CONT.
CORNER BAR	COR.
VERTICAL	VERT.
HORIZONTAL	HORZ.
STIRRUPS	STPS.
EACH WAY	EW
EACH FACE	EF
INNER FACE	IF
OUTER FACE	OF
EACH SIDE	ES
EACH END	EE
DOWEL	DWL.
DOWEL/VERTICAL	D/V
TRANSVERSE	TRANS.
LONG WAY BAR	LW
SHORT WAY BAR	SW
ADDITIONAL	ADD'L

Bent Bar List														
Bar Mark	Qty	Size	Total Length	Type	'A'	'B'	'C'	'D'	'E'	'F'	'G'	'H'	'J'	'K'
3E02	148	#3	6'-11"	S4	0'-4"	2'-8"	0'-11"	2'-8"			0'-4"			
8E26	5	#8	16'-8"	2	1'-4"	15'-4"								
8E27	5	#8	13'-3"	2	1'-4"	11'-11"								



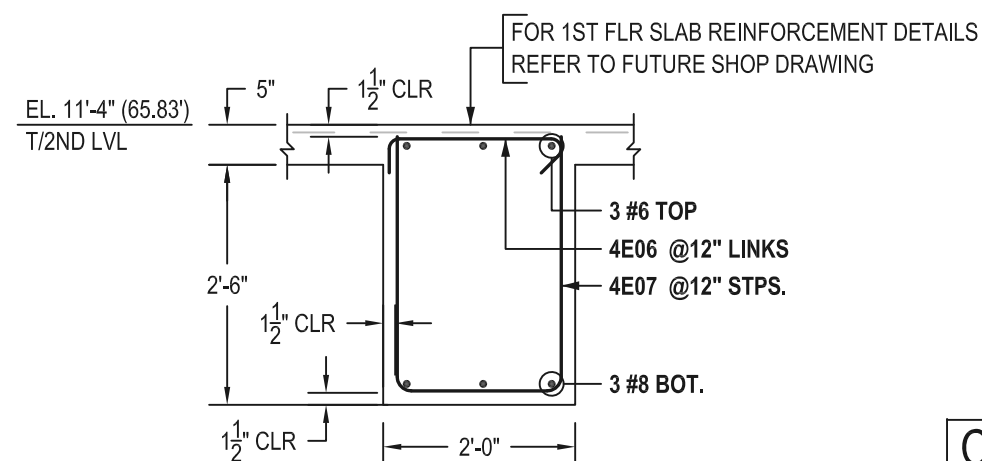


LOCATION-2
BEAM G-1 (24'X35")
ELEVATION J
SCALE - 1/4"=1'-0"
REF: S1.02, S1.07, S2.01, S2.02, S4.11, S4.12 & S4.13



BEAM G-1 (24'X35")
ELEVATION K
SCALE - 1/4"=1'-0"
REF: S1.02, S1.07, S2.01, S2.02, S4.11, S4.12 & S4.13

ENG. PLEASE VERIFY
BAR ARRANGEMENT DETAILED

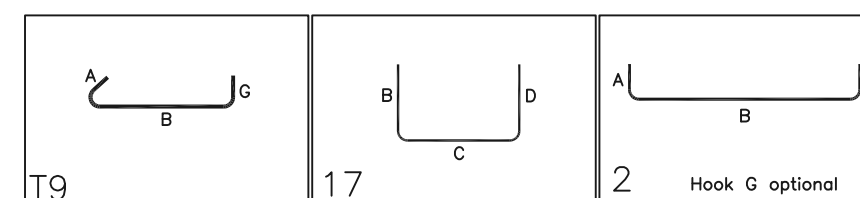


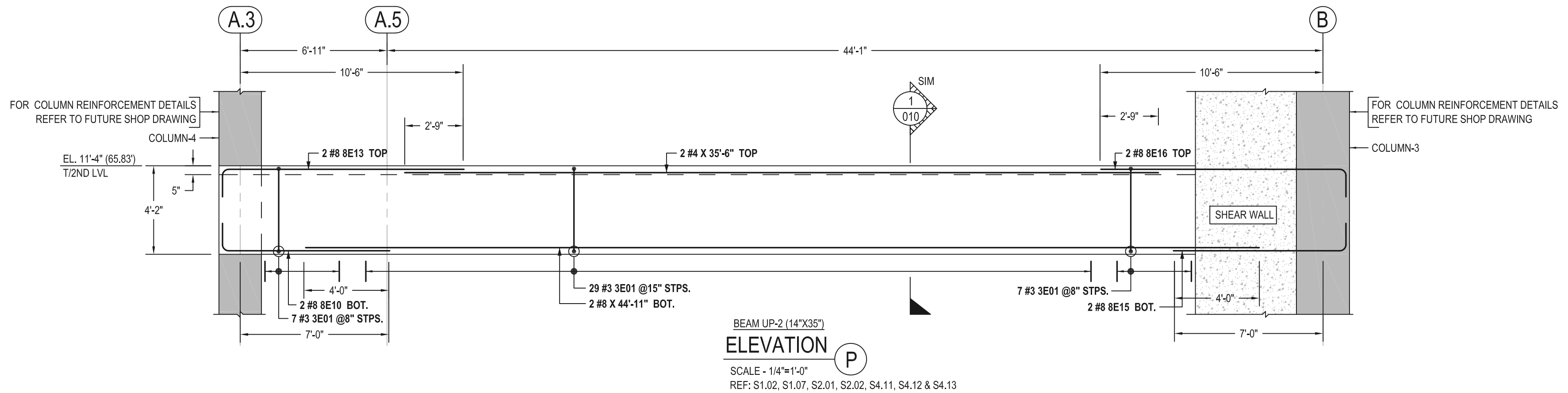
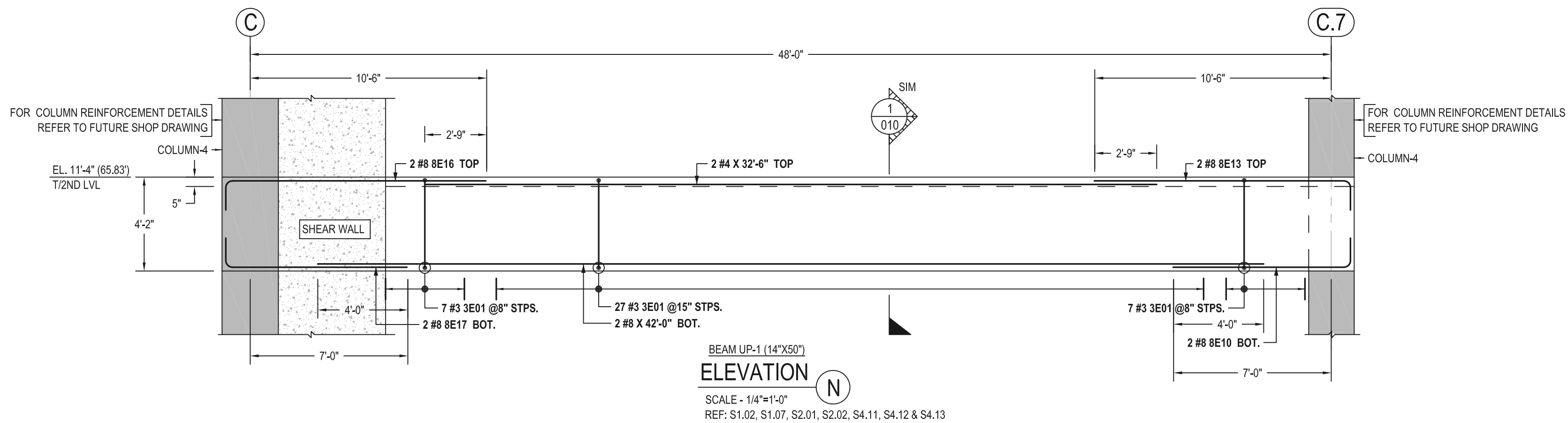
G-1 (24'X35")
SECTION 9
SCALE - 1/2"=1'-0"
REF: 23/S1.02

COVER DETAILS	
REF: GSN/S0.01	
FOR CONC.BEAM	
BOTTOM	1 1/2" CLR.
SIDE	1 1/2" CLR.
TOP	1 1/2" CLR.

ABBREVIATIONS	
BOTTOM	BOT.
TOP&BOTTOM	T&B
CONTINUOUS	CONT.
CORNER BAR	COR.
VERTICAL	VERT.
HORIZONTAL	HORZ.
STIRRUPS	STPS.
EACH WAY	EW
EACH FACE	EF
INNER FACE	IF
OUTER FACE	OF
EACH SIDE	ES
EACH END	EE
DOWEL	DWL.
DOWEL/VERTICAL	D/V
TRANSVERSE	TRANS.
LONG WAY BAR	LW
SHORT WAY BAR	SW
ADDITIONAL	ADD'L

Drawing Sheet : R5.008				Bent Bar List												
Bar Mark	Qty	Size	Total Length	Type	'A'	'B'	'C'	'D'	'E'	'F'	'G'	'H'	'J'	'K'	'O'	'R'
4E06	230	#4	2'-7"	T9	0'-4 1/2"	1'-10"					0'-4 1/2"					
4E07	236	#4	7'-1"	17		2'-8"	1'-9"	2'-8"								
8E19	6	#8	14'-2"	2	1'-4"	12'-10"										
8E20	8	#8	13'-2"	2	1'-4"	11'-10"										
8E21	6	#8	14'-6"	2	1'-4"	13'-2"										
8E22	16	#8	13'-5"	2	1'-4"	12'-1"										
8E23	6	#8	14'-5"	2	1'-4"	13'-1"										
8E24	6	#8	14'-8"	2	1'-4"	13'-4"										
8E25	8	#8	13'-9"	2	1'-4"	12'-5"										

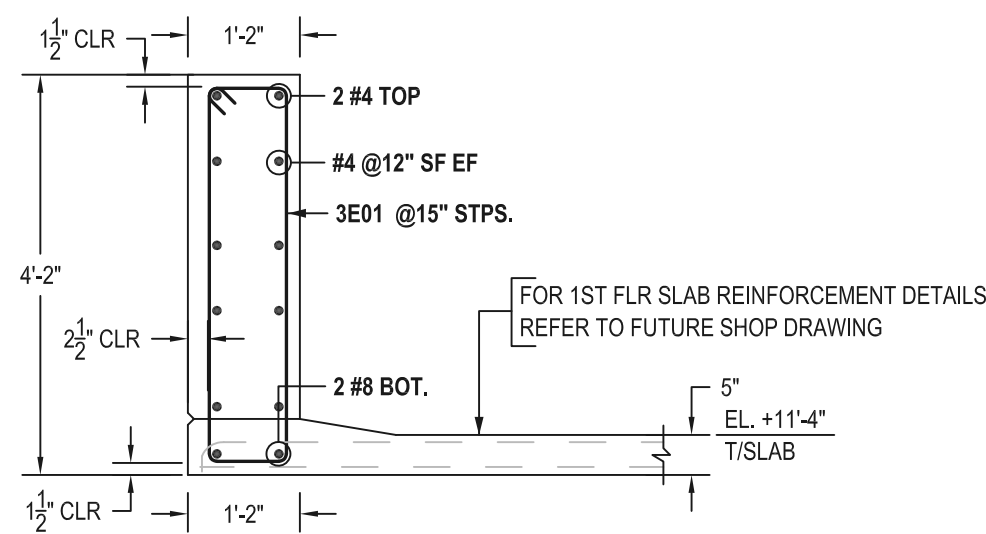




COVER DETAILS

REF: GSN/S0.01	
FOR CONC.BEAM	
BOTTOM	1 1/2" CLR.
SIDE	1 1/2" CLR.
TOP	1 1/2" CLR.

ABBREVIATIONS	
BOTTOM	BOT.
TOP&BOTTOM	T&B
CONTINUOUS	CONT.
CORNER BAR	COR.
VERTICAL	VERT.
HORIZONTAL	HORZ.
STIRRUPS	STPS.
EACH WAY	EW
EACH FACE	EF
INNER FACE	IF
OUTER FACE	OF
EACH SIDE	ES
EACH END	EE
DOWEL	DWL.
DOWEL/VERTICAL	D/V
TRANSVERSE	TRANS.
LONG WAY BAR	LW
SHORT WAY BAR	SW
ADDITIONAL	ADD'L

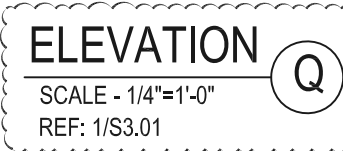


Drawing Sheet : R5.010				Bent Bar List												
Bar Mark	Qty	Size	Total Length	Type	'A'	'B'	'C'	'D'	'E'	'F'	'G'	'H'	'J'	'K'	'O'	'R'
8E16	4	#8	12'-11"	2	1'-4"	11'-7"										
8E17	2	#8	9'-5"	2	1'-4"	8'-1"										
8E15	2	#8	9'-6"	2	1'-4"	8'-2"										
3E01	98	#3	10'-2"	T1	0'-4"	0'-10"	3'-11"	0'-10"	3'-11"		0'-4"					
8E13	4	#8	12'-9"	2	1'-4"	11'-5"										
8E10	4	#8	9'-3"	2	1'-4"	7'-11"										

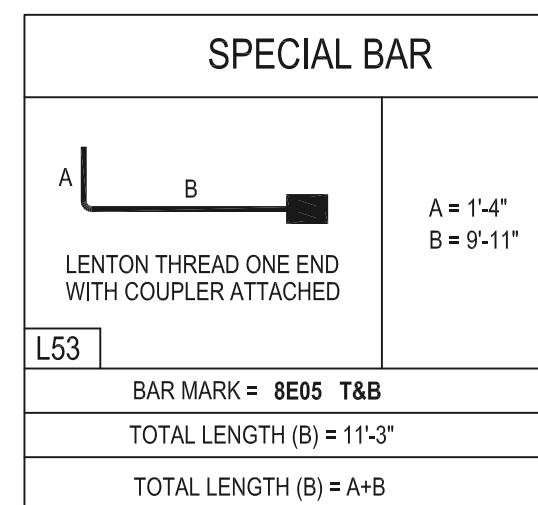
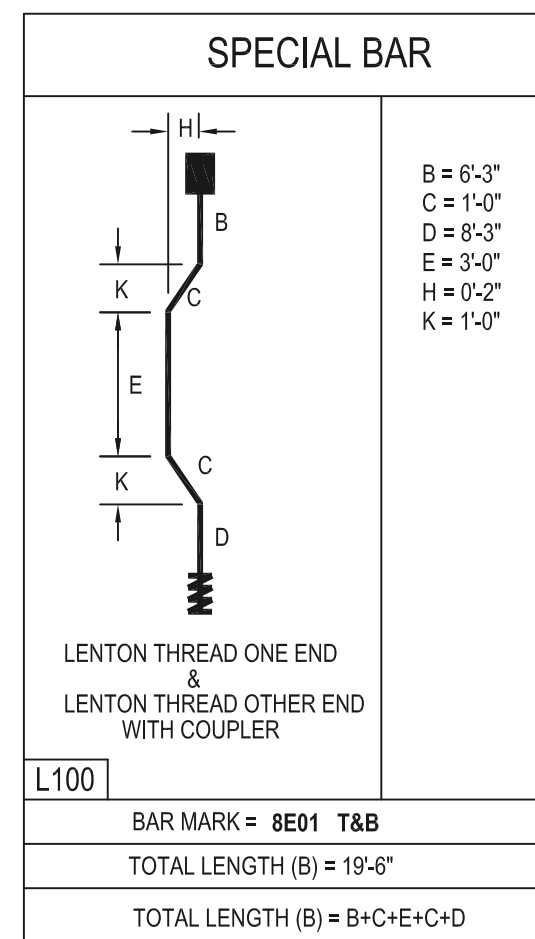
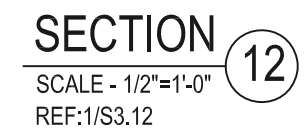


FOR APPROVAL WAIVED


ALL BARS IN THIS DRAWING ASTM A615 GRADE 60 BLACK UNCOATED

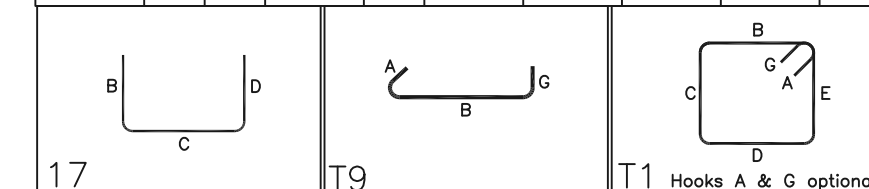


PLAN VIEW
SCALE - 1/4"=1'-0"
REF: H/S3.11

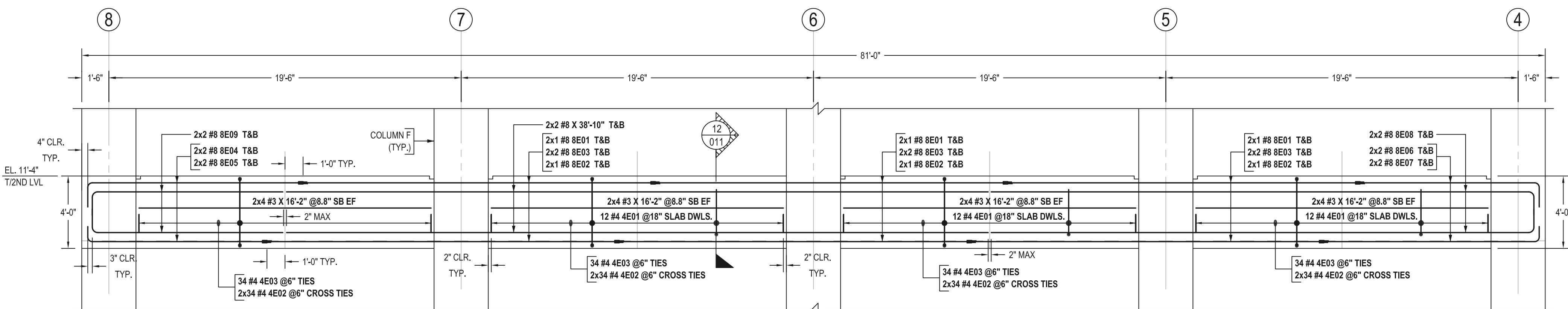


COVER DETAILS	
REF: 1/S3.12	
FOR GRADE BEAM	
BOTTOM	1½" CLR.
SIDE OUTER FACE	3" CLR.
SIDE INNER FACE	1½" CLR.
TOP	1½" CLR.

<h1 style="margin: 0;">SPECIAL BAR</h1>	
 <p style="margin: 0;">LENTON THREAD ONE END & LENTON THREAD OTHER END WITH COUPLER</p>	<p style="margin: 0;">$B = 19'-6"$</p>
<div style="border: 1px solid black; padding: 5px; display: inline-block;"> L54 </div>	
<p style="margin: 0;">BAR MARK = 8E03 T&B</p>	
<p style="margin: 0;">TOTAL LENGTH (B) = 19'-6"</p>	
<p style="margin: 0;">TOTAL LENGTH (B) = B</p>	

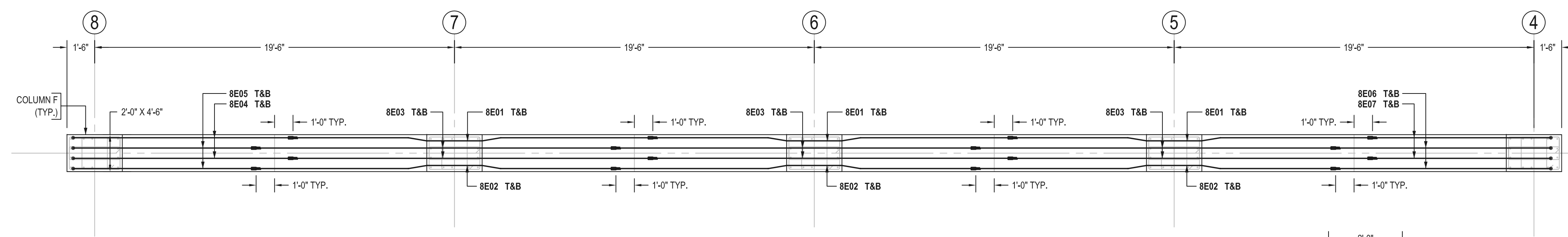
[illegible]

ALL BARS IN THIS DRAWING ASTM A615 GRADE 60 BLACK UNCOATED



ELEVATION
SCALE - 1/4"=1'-0"
REF: 1/S3.01

ENG. PLEASE VERIFY COUPLER LOCATION DETAILED



PLAN VIEW
SCALE - 1/4"=1'-0"
REF: H/S3.11

SPECIAL BAR

A = 1'-4"
B = 11'-11"

LENTON THREAD ONE END

L33

BAR MARK = 8E07 T&B

TOTAL LENGTH (B) = 13'-3"

TOTAL LENGTH (B) = A+B

SPECIAL BAR

A = 1'-4"
B = 9'-11"

LENTON THREAD ONE END

L33

BAR MARK = 8E06 T&B

TOTAL LENGTH (B) = 11'-3"

TOTAL LENGTH (B) = A+B

SPECIAL BAR

A = 1'-4"
B = 11'-11"

LENTON THREAD ONE END WITH COUPLER ATTACHED

L53

BAR MARK = 8E04 T&B

TOTAL LENGTH (B) = 13'-3"

TOTAL LENGTH (B) = A+B

SPECIAL BAR

A = 1'-4"
B = 9'-11"

LENTON THREAD ONE END WITH COUPLER ATTACHED

L53

BAR MARK = 8E05 T&B

TOTAL LENGTH (B) = 11'-3"

TOTAL LENGTH (B) = A+B

SPECIAL BAR

B = 8'-3"
C = 1'-0"
D = 6'-3"
E = 3'-0"
H = 0'-2"
K = 1'-0"

LENTON THREAD ONE END & LENTON THREAD OTHER END WITH COUPLER

L100

BAR MARK = 8E02 T&B

TOTAL LENGTH (B) = 19'-6"

TOTAL LENGTH (B) = B+C+E+C+D

SPECIAL BAR

B = 6'-3"
C = 1'-0"
D = 8'-3"
E = 3'-0"
H = 0'-2"
K = 1'-0"

LENTON THREAD ONE END & LENTON THREAD OTHER END WITH COUPLER

L100

BAR MARK = 8E01 T&B

TOTAL LENGTH (B) = 19'-6"

TOTAL LENGTH (B) = B+C+E+C+D

SPECIAL BAR

B = 19'-6"

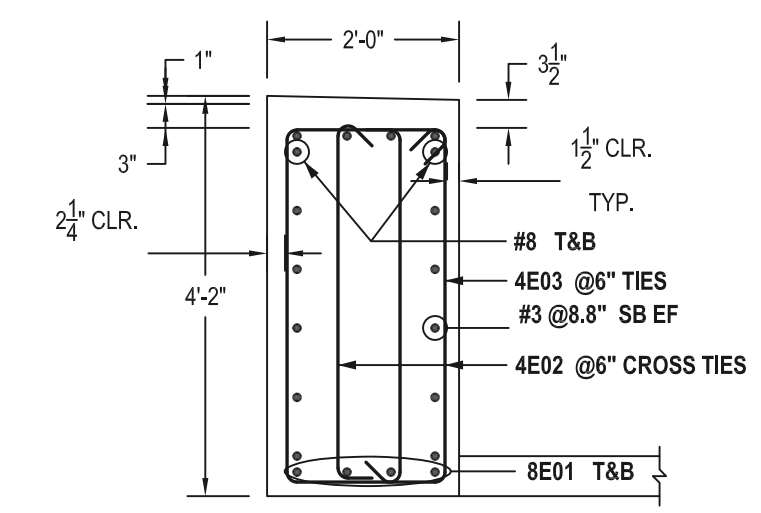
LENTON THREAD ONE END & LENTON THREAD OTHER END WITH COUPLER

L54

BAR MARK = 8E03 T&B

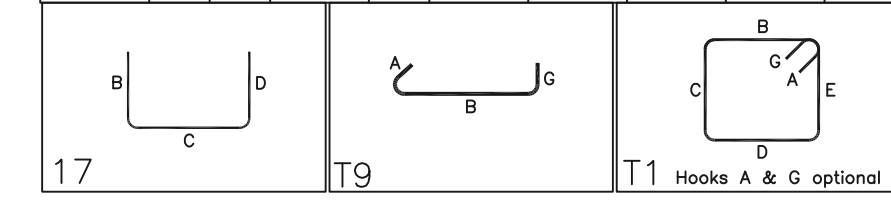
TOTAL LENGTH (B) = 19'-6"

TOTAL LENGTH (B) = B



SECTION 13
SCALE - 1/2"=1'-0"
REF: 1/S3.12

Drawing Sheet : R5.012			Bent Bar List													
Bar Mark	Qty	Size	Total Length	Type	'A'	'B'	'C'	'D'	'E'	'F'	'G'	'H'	'J'	'K'	'O'	'R'
4E01	36	#4	5'-0"	17		2'-6"	2'-6"									
4E02	272	#4	4'-5"	T9	0'-4 1/2"	3'-8 1/2"					0'-4 1/2"					
4E03	136	#4	11'-6"	T1	0'-4 1/2"	1'-8 1/2"	3'-8 1/2"	1'-8 1/2"	3'-8 1/2"		0'-4 1/2"					
8E01	6	#8	18'-6"	L100		6'-3"	1'-0"	8'-3"	3'-0"			0'-2"		1'-0"		
8E02	6	#8	18'-6"	L100		8'-3"	1'-0"	6'-3"	3'-0"			0'-2"		1'-0"		
8E03	12	#8	19'-6"	L54		19'-6"										
8E04	4	#8	13'-3"	L53	1'-4"	11'-11"										
8E05	4	#8	11'-3"	L53	1'-4"	9'-11"										
8E06	4	#8	11'-3"	L33	1'-4"	9'-11"										
8E07	4	#8	13'-3"	L33	1'-4"	11'-11"										
8E08	4	#8	31'-5"	2	1'-4"	30'-1"										
8E09	4	#8	11'-11"	2	1'-4"	10'-7"										



COVER DETAILS
REF: 1/S3.12

FOR GRADE BEAM

BOTTOM	1 1/2" CLR.
SIDE OUTER FACE	3" CLR.
SIDE INNER FACE	1 1/2" CLR.
TOP	1 1/2" CLR.